



**MESA  
TACTICAL**

CATALOG 32 / JANUARY 2026





# MESA TACTICAL®

## MADE IN AMERICA

Since 2004 Mesa Tactical has been a leading supplier of innovative professional-grade tactical shotgun accessories for law enforcement, the military and personal defense. All Mesa Tactical products (except apparel) are made in the USA, and feature a lifetime warranty. The company is based in Reno, Nevada.



MESATACTICAL.COM





The Urbino Tactical Stock is a modular fixed length shotgun stock with a pistol grip and 12½ inch length of pull. It is made of sturdy glass-filled nylon with a rubber grip sleeve and buttplate. Options include adjustable cheek riser for use with optics and recoil-absorbing Limbsaver gel buttplate.



## URBINO® TACTICAL STOCKS FOR SHOTGUNS

### URBINO PISTOL GRIP STOCKS FOR BENELLI® SHOTGUNS

Urbino stocks for Benelli M2 can also be installed on Benelli M1 shotguns after minor fitting.

Part No	Description
90050	Urbino Pistol Grip Stock for Ben M2 and SBE3 (Standard Butt, 12-GA)
90060	Urbino Pistol Grip Stock for Ben M2 and SBE3 (Riser, Standard Butt, 12-GA)
91500	Urbino Pistol Grip Stock for Ben M2 and SBE3 (Limbsaver, 12-GA)
91510	Urbino Pistol Grip Stock for Ben M2 and SBE3 (Riser, Limbsaver, 12-GA)
90030	Urbino Pistol Grip Stock for Ben M4 (Standard Butt, 12-GA)
90040	Urbino Pistol Grip Stock for Ben M4 (Riser, Standard Butt, 12-GA)
91460	Urbino Pistol Grip Stock for Ben M4 (Limbsaver, 12-GA)
91470	Urbino Pistol Grip Stock for Ben M4 (Riser, Limbsaver, 12-GA)
92410	Urbino Pistol Grip Stock for Ben SuperNova (Standard Butt, 12-GA)
92420	Urbino Pistol Grip Stock for Ben SuperNova (Riser, Standard Butt, 12-GA)
92430	Urbino Pistol Grip Stock for Ben SuperNova (Limbsaver, 12-GA)
92440	Urbino Pistol Grip Stock for Ben SuperNova (Riser, Limbsaver, 12-GA)

### URBINO PISTOL GRIP STOCKS FOR BERETTA® SHOTGUNS

Part No	Description
94960	Urbino Pistol Grip Stock for Ber 1301 and A300 (Standard Butt, 12-GA)
94970	Urbino Pistol Grip Stock for Ber 1301 and A300 (Riser, Standard Butt, 12-GA)
94980	Urbino Pistol Grip Stock for Ber 1301 and A300 (Limbsaver, 12-GA)
94990	Urbino Pistol Grip Stock for Ber 1301 and A300 (Riser, Limbsaver, 12-GA)

# URBINO® TACTICAL STOCKS FOR SHOTGUNS

## URBINO PISTOL GRIP STOCKS FOR REMINGTON® SHOTGUNS

Part No	Description
90070	Urbino Pistol Grip Stock for Rem 870 (Standard Butt, 12-GA)
90080	Urbino Pistol Grip Stock for Rem 870 (Riser, Standard Butt, 12-GA)
91540	Urbino Pistol Grip Stock for Rem 870 (Limbsaver, 12-GA)
91550	Urbino Pistol Grip Stock for Rem 870 (Riser, Limbsaver, 12-GA)
90185	Urbino Pistol Grip Stock for Rem 1100 and 11-87 (Standard Butt, 12-GA)
90186	Urbino Pistol Grip Stock for Rem 1100 and 11-87 (Riser, Standard Butt, 12-GA)
90187	Urbino Pistol Grip Stock for Rem 1100 and 11-87 (Limbsaver, 12-GA)
90188	Urbino Pistol Grip Stock for Rem 1100 and 11-87 (Riser, Limbsaver, 12-GA)

## BUTTPAD ASSEMBLIES FOR URBINO TACTICAL STOCKS

Urbino Buttstocks can be easily upgraded in the field without tools.  
Urbino stocks with cheek risers need the appropriate cheek riser Buttstocks.

Part No	Description
90520	Standard Buttpad for Urbino Stock (Black)
90530	Limbsaver Buttpad for Urbino Stock (Black)
92510	Standard Buttpad for Urbino Stock (Riser) (Black)
92520	Limbsaver Buttpad for Urbino Stock (Riser) (Black)

## URBINO PISTOL GRIP STOCKS FOR MOSSBERG® SHOTGUNS

Part No	Description
94680	Urbino Pistol Grip Stock for Moss 930, 940 and 990 (Standard Butt, 12-GA)
94690	Urbino Pistol Grip Stock for Moss 930, 940 and 990 (Riser, Standard Butt, 12-GA)
94700	Urbino Pistol Grip Stock for Moss 930, 940 and 990 (Limbsaver, 12-GA)
94710	Urbino Pistol Grip Stock for Moss 930, 940 and 990 (Riser, Limbsaver, 12-GA)

*The following kit is designed for gunsmiths and includes shortened return spring, return spring tube and receiver bushing.*

Part No	Description
91140	Buttstock Shortening Kit for Moss 930, 940 and 990



## TELESCOPING STOCK & ADAPTER KITS

Stock adapters accept most third-party AR-15 rifle stocks or pistol grips, allowing you to build your own custom shotgun stock from standard AR-15 rifle furniture.

Complete telescoping stock kits include stock adapter, Mesatac Trego™ pistol grip and push-button sling swivel.

Hydraulic recoil starter kits include the stock adapter and KynSHOT™ hydraulic recoil buffer, plus installation hardware (no stock or grip). The Mesa Tactical telescoping stock kits including KynSHOT hydraulic buffers are the best solutions for shotgun recoil management on the market; nothing else comes close.

### LEO® TELESCOPING STOCK ADAPTERS AND CONVERSION KITS

LEO telescoping stock systems feature the factory stock elevation and are by far the most popular telescoping stock set-ups.

### LEO TELESCOPING STOCKS FOR BERETTA SHOTGUNS

Part No	Description
91050	LEO Stock Adapter for Ber 1301 (12-GA)
91060	LEO Stock Kit for Ber 1301 (12-GA)
95660	LEO Recoil Starter Pack for Ber 1301 (standard damping, 12-GA)
90010	LEO Recoil Starter Pack for Ber 1301 (selectable damping, 12-GA)
91070	LEO Recoil Stock Kit for Ber 1301 (standard damping, 12-GA)
90110	LEO Recoil Stock Kit for Ber 1301 (selectable damping, 12-GA)



### LEO TELESCOPING STOCKS FOR MOSSBERG SHOTGUNS

Stock kits and adapters for the Mossberg 500 will also fit Mossberg 590 and Maverick 88 shotguns.

Part No	Description
92630	LEO Stock Adapter for Moss 500 (12-GA and 20-GA)
92640	LEO Stock Kit for Moss 500 (12-GA and 20-GA)
93160	LEO Recoil Starter Pack for Moss 500 (standard damping, 12-GA and 20-GA)
90020	LEO Recoil Starter Pack for Moss 500 (selectable damping, 12-GA and 20-GA)
92650	LEO Recoil Stock Kit for Moss 500 (standard damping, 12-GA and 20-GA)
90120	LEO Recoil Stock Kit for Moss 500 (selectable damping, 12-GA and 20-GA)



## LEO TELESCOPING STOCKS FOR REMINGTON SHOTGUNS

Part No	Description
91150	LEO Stock Adapter for Rem 870 (12-GA only)
91160	LEO Stock Kit for Rem 870 (12-GA only)
91180	LEO Recoil Starter Pack for Rem 870 (standard damping, 12-GA only)
90090	LEO Recoil Starter Pack for Rem 870 (selectable damping, 12-GA only)
91170	LEO Recoil Stock Kit for Rem 870 (standard damping, 12-GA only)
90130	LEO Recoil Stock Kit for Rem 870 (selectable damping, 12-GA only)

Stock kits and adapters for the Remington V3 will also fit Remington Tac-13.

Part No	Description
95830	LEO Stock Adapter for Rem V3 (12-GA)
95840	LEO Stock Kit for Rem V3 (12-GA)
95850	LEO Recoil Starter Pack for Rem V3 (standard damping, 12-GA)
90100	LEO Recoil Starter Pack for Rem V3 (selectable damping, 12-GA)
95860	LEO Recoil Stock Kit for Rem V3 (standard damping, 12-GA)
90180	LEO Recoil Stock Kit for Rem V3 (selectable damping, 12-GA)
91860	Stock Shim for Rem V3 Tac-13

If installing this LEO adapter on a Remington Tac-13 shotgun, you must also purchase stock shim part number 91860 (US customers will also need an NFA tax stamp).

## HIGH-TUBE® TELESCOPING STOCK ADAPTERS AND CONVERSION KITS

High-tube kits feature a stock elevation similar to the AR-15 rifle, and thus require rail-mounted optics, so most kits include a top Picatinny rail. They accept any AR-15 rifle stocks or pistol grips.

Part No	Description
95360	High-tube Stock Adapter for Rem 870 (12-GA, no rail)
95380	High-tube Stock Kit for Rem 870 (12-GA, no rail)
96100	High-tube Recoil Starter Pack for Rem 870 (standard damping, 12-GA, no rail)
90270	High-tube Recoil Starter Pack for Rem 870 (selectable damping, 12-GA, no rail)
95340	High-tube Recoil Stock Kit for Rem 870 (standard damping, 12-GA, no rail)
90350	High-tube Recoil Stock Kit for Rem 870 (selectable damping, 12-GA, no rail)
90630	High-tube Stock Adapter and Rail Kit for Rem 870 (12-GA, 9½ in rail)
90500	High-tube Stock Kit for Rem 870 (12-GA, 9½ in rail)
96120	High-tube Recoil Starter Pack for Rem 870 (standard damping, 12-GA, 9½ in rail)
90260	High-tube Recoil Starter Pack for Rem 870 (selectable damping, 12-GA, 9½ in rail)
92290	High-tube Recoil Stock Kit for Rem 870 (standard damping, 12-GA, 9½ in rail)
90360	High-tube Recoil Stock Kit for Rem 870 (selectable damping, 12-GA, 9½ in rail)



## KYNSHOT HYDRAULIC RECOIL BUFFER

The KynSHOT Hydraulic Buffer is available separately and can accept mil-spec Buttstocks. It replaces the receiver extension tube on all Mesa Tactical telescoping stock systems. These buffer assemblies cannot be fitted to AR-15 rifles.

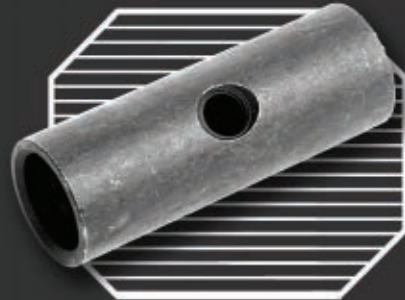
The RB5100 selectable damping hydraulic buffer comes with three damping settings.



Part No	Description
92240	KynSHOT RB5103 Hydraulic Buffer (standard damping, mil-spec)
91320	KynSHOT RB5100 Hydraulic Buffer (selectable damping, mil-spec)

## REPLACEMENT ANTI-ROTATION DOUBLE-ENDED QD SOCKET

These new anti-rotation replacement QD sockets ensure sling swivels cannot spin 360 degrees, reducing the tendency of sling webbing to tangle. They are for LEO stock adapters, not High-tube adapters. They can also be used to upgrade Mesatac® Faro® adapters for the FN SCAR rifle.



Part No	Description
90830	Replacement Anti-Rotation Double-Ended QD Socket

## BREACHING SHOTGUN STOCK REPLACEMENT PLUG

This steel plug can be threaded onto any Mesa Tactical stock adapter to replace the receiver extension tube or hydraulic buffer. It features a machined QD socket to accept push-button sling swivels, and includes the Mesa Tactical AR-15 rifle Armorer and Bartender's Tool.

Part No	Description
95270	Breaching Shotgun Stock Replacement Plug

A person wearing a black tactical cap with a logo, glasses, and a black long-sleeved shirt is aiming a shotgun. The shotgun has a black aluminum forend with M-LOK attachment points. The background is a bright, hazy outdoor setting.

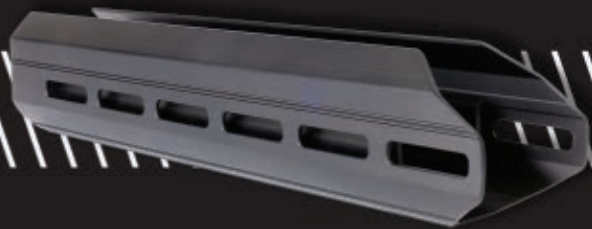
## TRUCKEE® FORENDS FOR SHOTGUNS

Truckee aluminum forends and handguards feature M-LOK® accessory attachment points at the sides and along the bottom.





# TRUCKEE FORENDS



## TRUCKEE FORENDS FOR BENELLI SHOTGUNS

Part No	Description
96140	Truckee Forend for Ben M2 Tactical (12-GA, M-LOK, 9 in)
95700	Truckee Forend for Ben M4 (12-GA, M-LOK, 8½ in)
95690	Truckee Forend for Ben M4 (12-GA, M-LOK, 11 in)
96150	Truckee Forend for Ben M4 (12-GA, M-LOK, 15 in)

## TRUCKEE FORENDS FOR BERETTA SHOTGUNS

Part No	Description
95320	Truckee Forend for Ber 1301 (12-GA, M-LOK, 13 in)
95520	Truckee Forend for Ber 1301 (12-GA, M-LOK, 15¾ in)



## TRUCKEE FORENDS FOR REMINGTON SHOTGUNS

Part No	Description
93270	Truckee Forend for Rem 870 (12-GA, M-LOK, 7½ in)
93280	Truckee Forend for Rem 870 (12-GA, M-LOK, 9 in)
93290	Truckee Forend for Rem 870 (12-GA, M-LOK, 10½ in)
95870	Truckee Forend for Rem V3 (12-GA, M-LOK, 9 in)

## TRUCKEE FORENDS FOR MOSSBERG SHOTGUNS

Truckee forends for the Mossberg 500 will also fit Mossberg 590 shotguns.

Part No	Description
95530	Truckee Forend for Moss 500 and 590 (12-GA, M-LOK, 8¾ in)
95540	Truckee Forend for Moss 500 and 590 (12-GA, M-LOK, 10¼ in)
95550	Truckee Forend for Moss 500 and 590 (12-GA, M-LOK, 11¾ in)
95580	Truckee Forend for Moss 590 Shockwave and rail (12-GA, M-LOK, 8¾ in)
96200	Truckee Forend for Moss 930 (12-GA, M-LOK, 10½ in)

## REFLEX SIGHT MOUNTS FOR SHOTGUNS

These are CNC machined aluminum mounts for pistol-style reflex sights.

### TRIJICON RMR REFLEX SIGHT MOUNTS FOR SHOTGUNS

Part No	Description
90400	Reflex Sight Mount for Ben M2 Tactical (RMR)
90410	Reflex Sight Mount for Ben M4 (RMR)
90590	Reflex Sight Mount for Ber 1301 Tactical and A300 (RMR)

### AIMPOINT ACRO REFLEX SIGHT MOUNTS FOR SHOTGUNS

Part No	Description
94280	Reflex Sight Mount for Ben M2 Tactical (Acro)
94290	Reflex Sight Mount for Ben M4 (Acro)
90029	Reflex Sight Mount for Ben SBE3 (Acro)
94360	Reflex Sight Mount for Ber 1301 Tactical and A300 (Acro)



## SURESHELL® SHOTSHELL CARRIERS

Mesa Tactical redefined the on-gun shell carrier 20 years ago with the introduction of the rugged, reliable and widely copied SureShell carriers. Aluminum yokes are machined from billet aluminum and use a single elastomer shell retention tube; polymer yokes are injection-molded glass-filled nylon and feature two elastomer shell retention tubes.



### SIDE MOUNT SHELL CARRIERS

Side-mount carriers replace the shotgun trigger pins with custom threaded fasteners to securely fasten the carrier assembly to the side of the receiver.

#### REMINGTON

SureShell carriers for the Remington 870 will also fit the Remington 1100 and 11-87 semi-automatics (except right-side carriers).

Part No	Description
90320	SureShell Alum Carrier for Rem 870 (4-Shell, 12-GA) (Left Side)
90600	SureShell Alum Carrier for Rem 870 (4-Shell, 12-GA) (Right Side)
94740	SureShell Poly Carrier for Rem 870 (6-Shell, 12-GA)
90210	SureShell Alum Carrier for Rem 870 (6-Shell, 12-GA)
90420	SureShell Alum Carrier for Rem 870 (8-Shell, 12-GA)
95880	SureShell Alum Carrier for Rem V3 (4-Shell, 12-GA)
96090	SureShell Poly Carrier for Rem V3 (6-Shell, 12-GA)
95890	SureShell Alum Carrier for Rem V3 (6-Shell, 12-GA)



# SIDE MOUNT SHELL CARRIERS

(CONTINUED)

## MOSSBERG

Sidemount SureShell carriers for the Mossberg 500 will also fit Mossberg 590 and Maverick 88 shotguns.

Part No	Description
91240	SureShell Alum Carrier for Moss 500 (4-Shell, 12-GA)
94750	SureShell Poly Carrier for Moss 500 (6-Shell, 12-GA)
90390	SureShell Alum Carrier for Moss 500 (6-Shell, 12-GA)
93020	SureShell Alum Carrier for Moss 930, 940 and 990 (4-Shell, 12-GA)
94760	SureShell Poly Carrier for Moss 930, 940 and 990 (6-Shell, 12-GA)
93030	SureShell Alum Carrier for Moss 930, 940 and 990 (6-Shell, 12-GA)
95890	SureShell Alum Carrier for Rem V3 (6-Shell, 12-GA)

# SHELL CARRIERS WITH INTEGRATED PICATINNY RAIL

## BENELLI

Part No	Description
91210	SureShell Alum Carrier and Rail for Ben M2 Tactical (4-Shell, 12-GA)
94940	SureShell Poly Carrier and Rail for Ben M2 Tactical (6-Shell, 12-GA)
91220	SureShell Alum Carrier and Rail for Ben M2 Tactical (6-Shell, 12-GA)
90870	SureShell Alum Carrier and Rail for Ben M4 (4-Shell, 12-GA)
94930	SureShell Poly Carrier and Rail for Ben M4 (6-Shell, 12-GA)
90880	SureShell Alum Carrier and Rail for Ben M4 (6-Shell, 12-GA)
90890	SureShell Alum Carrier and Rail for Ben M4 (8-Shell, 12-GA)
92000	SureShell Alum Carrier and Rail for Ben SuperNova (4-Shell, 12-GA)
94920	SureShell Poly Carrier and Rail for Ben SuperNova (6-Shell, 12-GA)
92010	SureShell Alum Carrier and Rail for Ben SuperNova (6-Shell, 12-GA)
90189	SureShell Alum Carrier and Rail for Ben Nova 3 (6-shell, 12-GA)
90179	SureShell Poly Carrier and Rail for Ben Nova 3 (6-shell, 12-GA)

## BERETTA

Part No	Description
94200	SureShell Alum Carrier and Rail for Ber 1301 Comp (4-Shell, 12-GA)
94300	SureShell Poly Carrier and Rail for Ber 1301 Comp (6-Shell, 12-GA)
94210	SureShell Alum Carrier and Rail for Ber 1301 Comp (6-Shell, 12-GA)
94260	SureShell Alum Carrier and Rail for Ber 1301 Tactical and A300 (4-Shell, 12-GA)
94320	SureShell Poly Carrier and Rail for Ber 1301 Tactical and A300 (6-Shell, 12-GA)
94270	SureShell Alum Carrier and Rail for Ber 1301 Tactical and A300 (6-Shell, 12-GA)

## KEL-TEC

Part No	Description
94910	SureShell Poly Carrier and Rail for Kel-Tec KSG (12-Shell, 12-GA, Both Sides)
93000	SureShell Alum Carrier and Rail for Kel-Tec KSG (12-Shell, 12-GA, Both Sides)

# SHELL CARRIERS WITH INTEGRATED PICATINNY RAIL

(CONTINUED)

## REMINGTON

SureShell carriers for the Remington 870 will also fit the Remington 1100 and 11-87 semi-automatics. They employ a saddle style configuration, secured to both sides of the receiver with threaded fasteners replacing the trigger pins. The 20 inch Remington rails with no clamps require magazine clamp to support front of rail.

Part No	Description
94830	SureShell Poly Carrier and Saddle Rail for Rem 870 (6-Shell, 12-GA)
91630	SureShell Alum Carrier and Saddle Rail for Rem 870/100/11-87 (6-Shell, 12-GA)
94800	SureShell Poly Carrier and Saddle Rail for Rem 870 w/ Mag Clamp (6-Shell, 12-GA, 20 in rail)
92130	SureShell Alum Carrier and Saddle Rail for Rem 870 w/ Mag Clamp (6-Shell, 12-GA, 20 in rail)
94840	SureShell Poly Carrier and Saddle Rail for Rem 870 (6-Shell, 12-GA, 20 in rail, no clamp)
91980	SureShell Alum Carrier and Saddle Rail for Rem 870 (6-Shell, 12-GA, 20 in rail, no clamp)
94040	SureShell Alum Carrier and Rail for Rem V3 (4-Shell, 12-GA, 5¾ in)
94050	SureShell Poly Carrier and Rail for Rem V3 (6-Shell, 12-GA, 5¾ in)
94060	SureShell Alum Carrier and Rail for Rem V3 (6-Shell, 12-GA, 5¾ in)

## MOSSBERG

SureShell carriers for the Mossberg 500 will also fit the Mossberg 590 and Mossberg 590 Shockwave shotguns, but not the Maverick 88 shotguns, which are not drilled and tapped at the factory. SureShell carriers for the Mossberg 930 will also fit the Mossberg 940 and Mossberg 990 shotguns.

Part No	Description
93620	SureShell Alum Carrier and Rail for Moss 500 (4-Shell, 12-GA)
94880	SureShell Poly Carrier and Rail for Moss 500 (6-Shell, 12-GA)
93630	SureShell Alum Carrier and Rail for Moss 500 (6-Shell, 12-GA)
94560	SureShell Alum Carrier and Rail for Moss 930, 940 and 990 (4-Shell, 12-GA)
94890	SureShell Poly Carrier and Rail for Moss 930, 940 and 990 (6-Shell, 12-GA)
94570	SureShell Alum Carrier and Rail for Moss 930, 940 and 990 (6-Shell, 12-GA)

# SURESHELL CARRIERS WITH FALLON™ RAILS FOR SHOCKWAVE STYLE SHOTGUNS

These SureShell carriers include integrated Picatinny rails that extend the length of the barrel, with one or two with M-LOK slots at the front.

## REMINGTON

Part No	Description
93060	SureShell Poly Carrier and Rail for Rem 870 Tac-14 (6-Shell, 12-GA, 18 in rail)
90720	SureShell Alum Carrier and Rail for Rem 870 Tac-14 (6-Shell, 12-GA, 18 in rail)
93080	SureShell Poly Carrier and Rail for Rem Tac-13 (6-Shell, 12-GA, 18 in rail)
93430	SureShell Alum Carrier and Rail for Rem Tac-13 (6-Shell, 12-GA, 18 in rail)



## MOSSBERG

SureShell carriers with rails for Mossberg 590 Shockwave shotgun fit the 14 inch barrel versions only. The 90710 is a limited edition assembly with no M-LOK slot.

Part No	Description
90710	SureShell Alum Carrier and Rail for Moss 590 Shockwave (4-Shell, 12-GA, 18 in rail, NO M-LOK)
94080	SureShell Poly Carrier and Rail for Moss 590 Shockwave (6-Shell, 12-GA, 18 in rail)
94070	SureShell Alum Carrier and Rail for Moss 590 Shockwave (6-Shell, 12-GA, 18 in rail)





## SURESHELL CARRIERS WITH INTEGRATED REFLEX SIGHT MOUNT

The following shell carriers include an integral reflex sight mount supporting cowitness with the factory ghost ring sights.

### BENELLI

Part No	Description
95190	SureShell Alum Carrier and Reflex Mount for Ben M2 Tactical (4-Shell, 12-GA, RMR)
95240	SureShell Poly Carrier and Reflex Mount for Ben M2 Tactical (6-Shell, 12-GA, RMR)
95200	SureShell Alum Carrier and Reflex Mount for Ben M2 Tactical (6-Shell, 12-GA, RMR)
95210	SureShell Alum Carrier and Reflex Mount for Ben M4 (4-Shell, 12-GA, RMR)
95260	SureShell Poly Carrier and Reflex Mount for Ben M4 (6-Shell, 12-GA, RMR)
95220	SureShell Alum Carrier and Reflex Mount for Ben M4 (6-Shell, 12-GA, RMR)
94140	SureShell Poly Carrier and Reflex Mount for Ben M4 (6-Shell, 12-GA, Acro)
94170	SureShell Alum Carrier and Reflex Mount for Ben M4 (6-Shell, 12-GA, Acro)

### BERETTA

Part No	Description
95280	SureShell Alum Carrier and Reflex Mount for Ber 1301 Tac and A300 (4-Shell, 12-GA, RMR)
95310	SureShell Poly Carrier and Reflex Mount for Ber 1301 Tac and A300 (6-Shell, 12-GA, RMR)
95290	SureShell Alum Carrier and Reflex Mount for Ber 1301 Tac and A300 (6-Shell, 12-GA, RMR)
94340	SureShell Poly Carrier and Reflex Mount for Ber 1301 Tac and A300 (6-Shell, 12-GA, Acro)
94350	SureShell Alum Carrier and Reflex Mount for Ber 1301 Tac and A300 (6-Shell, 12-GA, Acro)



## STOCK MOUNT SURESHELL CARRIERS

### M4 CARBINE BUTTSTOCK MOUNT SURESHELL SHOTSHELL CARRIERS

These shell carriers mount to the sides of standard M4 Carbine Buttstocks. Supplemental hardware kits can be used to install the shell carriers on additional AR-15 rifle Buttstock designs.

Part No	Description
93340	SureShell Alum Carrier for M4 Carbine Stock (4-Shell, 12-GA, ambi)
94770	SureShell Poly Carrier for M4 Carbine Stock (6-Shell, 12-GA, ambi)
93350	SureShell Alum Carrier for M4 Carbine Stock (6-Shell, 12-GA, ambi)
90220	Supplemental Hardware for SureShell Carrier for B5 Bravo Stock
90230	Supplemental Hardware for SureShell Carrier for BCM Gunfighter Mod 0 Stock
90240	Supplemental Hardware for SureShell Carrier for LMT Crane Stock
90250	Supplemental Hardware for SureShell Carrier for Magpul CTR and MOE Stock

### SURESHELL SHOTSHELL CARRIERS FOR THE URBINO TACTICAL STOCK SHOTSHELL CARRIERS

These shell carriers mount to the cheek riser of the Urbino Tactical stock.

Part No	Description
94720	SureShell Polymer Carrier for Urbino Riser (6-Shell, 12-GA) (Right Side)
90150	SureShell Alum Carrier for Urbino Riser (6-Shell, 12-GA) (Right Side)
94730	SureShell Polymer Carrier for Urbino Riser (6-Shell, 12-GA) (Left Side)
90170	SureShell Alum Carrier for Urbino Riser (6-Shell, 12-GA) (Left Side)

# ANTI-WALK TRIGGER PINS FOR SHOTGUNS

Mesa Tactical anti-walk trigger pins upgrade your worn factory pins with new stainless-steel threaded fasteners that will stay in place.

Part No	Description
93530	Anti-walk Trigger Pin Kit for Ben M2
93760	Anti-walk Trigger Pin Kit for Ber 1301 and A300
90860	Anti-walk Trigger Pin Kit for Rem 870 (12-GA)
93150	Anti-walk Trigger Pin Kit for Rem 870 (20-GA)
93740	Anti-walk Trigger Pin Kit for Rem V3
92840	Anti-walk Trigger Pin Kit for Moss 500
92850	Anti-walk Trigger Pin Kit for Moss 930, 940 and 990

# SLING RING® SHOTGUN SLING MOUNTS

Sling Ring all steel shotgun sling mounts fit between the shotgun receiver and stock and accept quick-release hook-style sling attachments.

Part No	Description
92310	Sling Ring Shotgun Sling Mount for Rem 870 (12-GA, left side)
92320	Sling Ring Shotgun Sling Mount for Rem 870 (12-GA, ambi)



# MAGAZINE CLAMPS FOR SHOTGUNS

Magazine clamps allow mounting of lights and slings to Remington 870, 1100 and 11-87 shotguns. They are used to support the front of SureShell carriers with full-length rails.

Part No	Description
90800	Magazine Clamp for Rem 870 (12-GA)
90650	Magazine Clamp w/ Sling Swivel for Rem 870 (12-GA)
90810	Magazine Clamp w/ Rail for Rem 870 (12-GA)
93920	Magazine Clamp w/ Rail and Sling Swivel for Rem 870 (12-GA)

# LUCY® STOCK ADAPTERS

Use these cast steel adapters to mount 12 gauge stocks on 20 gauge shotguns.



Part No	Description
93890	Lucy Adapter for 20 GA Shotguns (Rem 870)





## PRODUCTS FOR AR-15 AND OTHER RIFLES

Mesatac is Mesa Tactical's brand for rifle accessories and tools.

### FARO<sup>®</sup> ADAPTER FOR FN SCAR RIFLE

The Mesa Tactical Faro adapter allows any AR-15 rifle stock and grip to be attached to an FN SCAR rifle.



Part No	Description
92550	Mesatac Faro Stock Adapter for FN SCAR (Black)
92560	Mesatac Faro Stock Adapter for FN SCAR (FDE)



## MESATAC TREGO<sup>™</sup> GRIP FOR AR-15 RIFLES

This is a beavertail style grip with a comfortable rubber overmold.



Part No	Description
9385K	Mesatac Trego Grip for AR-15 rifle (beavertail, black)



Mesatac AR-15 Armorer and Bartender's Tool



Mesatac AR-15 Torque Rod

Mesatac Shotgun Vise Blocks



## ACCESSORIES, TOOLS, & SPARE PARTS

### ARMORERS' SHOP TOOLS

These are examples of a few tools our designers have found to be handy around the shop.

Part No	Description
94120	Mesatac AR-15 rifle Armorer and Bartender's Tool
90510	Mesatac AR-15 rifle Torque Rod (vise mount style)
90470	Mesatac Shotgun Forend Wrench for Rem 870 and Moss 500

### SHOTGUN VISE BLOCKS

These 3D-printed PETG vise blocks safely and securely hold your shotgun by the barrel and magazine for cleaning and maintenance.

Part No	Description
92730	Mesatac Shotgun Vise Blocks for Ben M2 Tactical (red)
92740	Mesatac Shotgun Vise Blocks for Ben M4 (full length magazine) (red)
92760	Mesatac Shotgun Vise Blocks for Ben SuperNova (red)
92780	Mesatac Shotgun Vise Blocks for Mossberg 500 (blue)
92790	Mesatac Shotgun Vise Blocks for Mossberg 590A1 (blue)
92800	Mesatac Shotgun Vise Blocks for Mossberg 930 (blue)
92860	Mesatac Shotgun Vise Blocks for Rem 870 (green)



## ACCESSORIES

Part No	Description
91190	Push Button Sling Swivel for 1 1/4 in Webbing
91850	LimbSaver Snap-on Recoil Pad for M4 Carbine Buttstocks
93070	AR-15 rifle Receiver Extension Tube (mil-spec)
92810	Low Profile CAR Stock Lock Nut
90660	M4 Carbine Stock (mil-spec) (no tube)



## SPARE PARTS FOR ARMORIES, AGENCIES AND INDIVIDUALS

Mesa Tactical products are protected by a lifetime warranty on quality and parts, but many agencies like to keep a supply of spare parts on hand, for convenience's sake.



### URBINO STOCK SPARE PARTS

Part No	Description
97390	Spare Hardware for Urbino Tactical Stock (Ben M2)
97260	Spare Hardware for Urbino Tactical Stock (Ben M4)
97380	Spare Hardware for Urbino Tactical Stock (Ben SuperNova)
97360	Spare Hardware for Urbino Tactical Stock (Ber 1301 and A300)
97300	Spare Hardware for Urbino Tactical Stock (Moss 930, 940 and 990)
97330	Spare Hardware for Urbino Tactical Stock (Rem 870)

### STOCK ADAPTER SPARE PARTS

Part No	Description
97310	Spare Hardware for LEO Adapter (Rem 870 Gen II, 12-GA)
97290	Spare Hardware for LEO Adapter (Moss 500 Gen II, 12-GA)
93210	Spares Pack: Hardware for LEO Stock Adapter for Rem 870 (12 GA, 10 count)
93200	Spares Pack: Hardware for LEO Stock Kit for Rem 870 (12 GA, 10 count)

### SURESHELL SPARE PARTS

Part No	Description
92910	Spares Pack: SureShell Replacement Retention Tubing (4-shell, A64 durometer, 10 count)
92920	Spares Pack: SureShell Replacement Retention Tubing (6-shell, A64 durometer, 10 count)
92930	Spares Pack: SureShell Replacement Retention Tubing (8-shell, A64 durometer, 10 count)
93400	Spares Pack: SureShell Replacement Retention Tubing (4-shell, A73 durometer, 10 count)
93410	Spares Pack: SureShell Replacement Retention Tubing (6-shell, A73 durometer, 10 count)
93420	Spares Pack: SureShell Replacement Retention Tubing (8-shell, A73 durometer, 10 count)
97240	Spare Hardware for SureShell Carrier (Ben M2 and Ben M4)
97270	Spare Hardware for SureShell Carrier (Ben SuperNova)
97370	Spare Hardware for SureShell Carrier (Ber 1301 and A300)
97320	Spare Hardware for SureShell Carrier for RMR mount (Ben M2 and Ben M4)
97230	Spare Hardware for SureShell Carrier (side mount, Rem 870, 12-GA)
97250	Spare Hardware for SureShell Carrier (side mount, Moss 500, 12-GA)
97350	Spare Hardware for SureShell Carrier (side mount, Moss 930, 940 and 990, 12-GA)
97280	Spare Hardware for SureShell Carrier with Saddle Rail (Rem 870, 12-GA)
97340	Spare Hardware for SureShell Carrier with Rail (Moss 500)
90480	Spares Pack: Hardware for SureShell Carrier for Ben M2 and Ben M4 (12 GA, 10 count)
93190	Spares Pack: Hardware for SureShell Sidemount Carrier for Rem 870 (12 GA, 10 count)
93440	Spares Pack: Hardware for SureShell Carrier and Saddle Rail for Rem 870 (12 GA, 10 count)
93100	Spares Pack: Hardware for SureShell Sidemount Carrier for Moss 500 (12 GA, 10 count)
94180	Spares Pack: Hardware for SureShell Sidemount Carrier for Moss 930, 940 and 990 (12 GA, 10 count)

## SWAG & CLOTHING

Mesa Tactical offers a full line of clothing, stickers and embroidered patches featuring the popular Mesa Tactical Guy logo. Stickers and patches are made in the USA; shirts and caps are imported.

GO TO  
**MESATACTICAL.COM**  
FOR THE  
LATEST UPDATES.

### STICKERS

Part No	Description
95770	Mesa Tactical Stickers (Mesa Tactical Guy)



### PATCHES

Part No	Description
95470	Mesa Tactical Embroidered Patch (Mesa Tactical Guy Logo, Forest Green)
95480	Mesa Tactical Embroidered Patch (Mesa Tactical Guy Logo, Multi-Cam)
95490	Mesa Tactical Embroidered Patch (Mesa Tactical Guy Logo, Desert Tan)
95500	Mesa Tactical Embroidered Patch (Mesa Tactical Guy Logo, White and Gray)
95510	Mesa Tactical Embroidered Patch (Mesa Tactical Guy Logo, Navy Blue)
95630	Mesa Tactical Embroidered Patch Pack (Mesa Tactical Guy Logo, Five Patches in Five Colors)



Part No	Description
90540	Mesa Tactical Operator's Cap, Black
90550	Mesa Tactical Operator's Cap, Khaki

### CAPS

## SHIRTS

ALL SHIRTS COME IN  
S, M, L, XL, 2XL, 3XL

Mesa Tactical Long Sleeve Tee  
Logo1, Navy



Mesa Tactical Long Sleeve Tee  
Logo4, Athletic Heather

Mesa Tactical Short Sleeve Tee  
Logo3, Olive Heather



Mesa Tactical Short Sleeve Tee  
Logo2, Black