

# ASSEMBLY AND OPERATION GUIDE



# MESA TACTICAL®

**MAXIMUM SECURITY  
FOR AN INSECURE WORLD**

**URBINO® TACTICAL STOCK  
FOR SHOTGUNS**

#47380 Rev E

# URBINO TACTICAL STOCK ASSEMBLY AND OPERATION GUIDE

Thank you for your purchase of the Mesa Tactical Urbino® stock for tactical shotguns. Our products are manufactured in the USA using the highest quality processes and materials, and should provide many years of reliable service.

The following documentation should answer most of your questions about installation and operation of the Urbino tactical stock.

**Please read once though this entire booklet before beginning to install the Urbino tactical stock.**

## CONTENTS

Product Overview .....	3
Shotgun Platform Compatibility .....	4
General Installation Instructions .....	4
Buttpad and Cheek Riser .....	4
Sling Plates .....	5
Pocket Hook Loops and Sling Loops.....	5
Rear Sling Plate.....	6
QD Sling Swivel.....	6
Mounting the Urbino Tactical Stock to the Shotgun.....	7
Bolt Mounting Installation .....	8
Small Nut Mounting Installation .....	9
Benelli Rear Stud.....	9
Large Nut Mounting Installation .....	10
Mossberg 930 Installation .....	11
Remove Mossberg 930 Shotgun Factory Stock.....	11
Remove Mossberg 930 Shotgun Factory Return Spring Tube and Return Spring .....	12
Install Shortened Return Spring and Return Spring Tube .....	14
Install Urbino Tactical Stock on Mossberg 930 Shotgun.....	15
Support .....	15
Warranty.....	16

## PRODUCT OVERVIEW

The Urbino tactical stock, named after the city in northern Italy where Benelli Armi SpA is headquartered, is a fixed-length pistol grip shotgun stock made from injection-molded glass-filled nylon. Developed to meet the needs of law enforcement and military operators, the rugged Urbino tactical stock features a “tactical” 12½ inch length of pull (LoP); soft urethane rubber grip sleeve; optional Limbsaver® butt pad; optional adjustable cheek riser and a variety of flexible sling mounting alternatives.

The reduced LoP makes the Urbino the first truly tactical stock for the Benelli M4 and other platforms. A shorter stock is necessary for use in tactical applications, especially with body armor. The Urbino tactical stock is durable, easy to shoulder and will not slip.



The Urbino tactical stock is also comfortable, thus reducing operator fatigue, especially during prolonged training and qualification sessions. The urethane rubber grip is padded at the rear to reduce recoil impact against the web of the operator’s hand, and the optional Limbsaver butt pad substantially reduces felt recoil.

The field-adjustable cheek riser was developed to provide superior cheek weld when using optics. The cheekpiece snaps onto rails molded into the sides of specially equipped Urbino tactical stock armatures. In the event of optics failure, the cheek riser can be quickly removed or readjusted to a lower level. Specially-developed SureShell® shot-shell carriers can be fitted to the cheek riser.

All Urbino tactical stocks include steel Benelli-style rear sling loops for 1¼ inch sling webbing. In addition, a hole at the lower rear of the stock accepts QD style sling swivels. Urbino tactical stocks can also be fitted with any of a variety of optional steel pocket sling mounts between the stock and the shotgun receiver.

## SHOTGUN PLATFORM COMPATIBILITY

The Urbino tactical stock is available for a number of 12 gauge shotgun platforms. The following chart indicates which platforms are supported by each model of Urbino tactical stock and which installation method is used. Refer to the associated page number for the installation method for your stock and shotgun.

<i>Shotgun platform</i>	<i>Urbino model</i>	<i>Installation method</i>	<i>Page</i>
Benelli M1	Benelli M2	Small nut mounting	9
Benelli M2	-	Small nut mounting	9
Benelli M3	Benelli M2	Small nut mounting	9
Benelli M4	-	Bolt mounting	8
Benelli SuperNova	-	Small nut mounting	9
Beretta 1301	-	Small nut mounting	9
Mossberg 930	-	Special for Mossberg 930	11
Remington 1100	Remington 870	Large nut mounting	10
Remington 11-87	Remington 870	Large nut mounting	10
Remington 870	-	Bolt mounting	8
Remington Versa Max	-	Bolt mounting	8

## GENERAL INSTALLATION INSTRUCTIONS

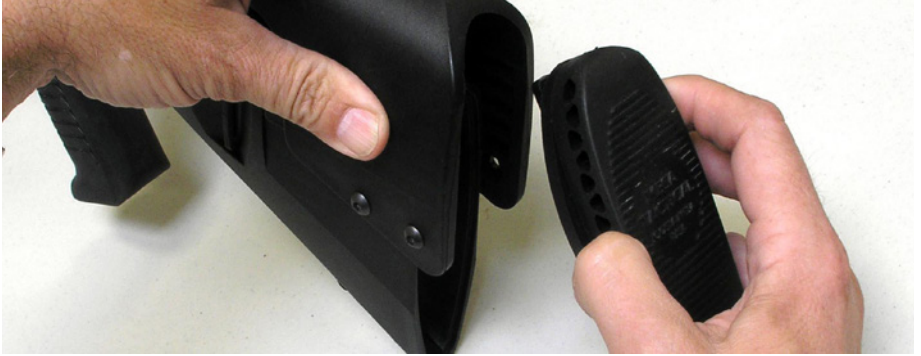
Before discussing installation instructions specific to the various shotgun platforms, we'll examine features common to all the Urbino tactical stocks.

### BUTTPAD AND CHEEK RISER

The Urbino tactical stock accepts four snap-in buttpad designs: two standard Santoprene buttpads; and two featuring a recoil-reducing Limbsaver pad. Each of the two styles is available for use with or without a cheek riser. These buttpad assemblies are interchangeable and are also available separately. The snap-in design allows easy access to the inside of the stock assembly for stock removal or installation.

The buttpad assembly is also an integral component of the Urbino tactical stock adjustable cheek riser system. Stocks supporting cheek risers feature “wings” on the buttplates

that retain the cheek riser on the stock. This is another reason for the snap-in design of the buttpads: to facilitate the rapid removal or adjustment of the Urbino cheek riser.



Urbino tactical stocks with cheek risers must use buttpads with cheek riser retaining “wings.”

The Urbino tactical stock cheek riser concept is simple. The cheek riser rides on a pair of rails molded into the sides of the stock armature, and is secured in place by the snap-in buttpad. There are five pairs of slots on the inside of the cheek riser offering a range of 1¼ inches of vertical adjustment in five elevations, in addition to using the stock with no cheek riser at all.

Because the cheek riser requires support rails on the side of the stock armature, cheek risers cannot be installed on Urbino tactical stocks that do not have these rails. So while an Urbino tactical stock with cheek riser rails can be used without the cheek riser, the opposite is not true: standard Urbino tactical stocks cannot accept cheek risers. The decision whether to support a cheek riser must be made upon initial purchase of the Urbino tactical stock.

## **SLING PLATES**

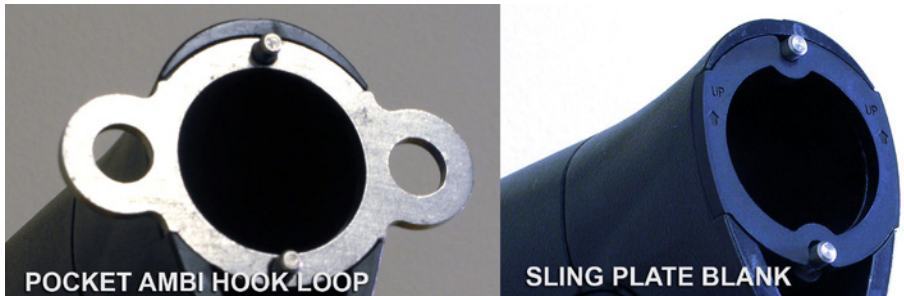
The Urbino tactical stock features three stamped steel sling mounting options: the pocket hook loop or sling loop; and the rear sling plate.

### **POCKET HOOK LOOPS AND SLING LOOPS**

Pocket hook loops and sling loops fit into a molded cavity or pocket at the front of the Urbino tactical stock where it meets the receiver. These sling mounts can be used with single- or three-point slings. If you do not want a sling mounting point in this location, use the stamped steel or nylon sling plate blank to fill the pocket.

With the Benelli M2 and similar models, two machined indexing pins are provided. Install the thinner ends of the pins in the holes in the front of the Urbino tactical stock,

and use them to help secure the sling loop or hook loop prior to installation. The pins may need to be tapped into place with a screw driver handle or similar implement.



Ambidextrous pocket sling attachments, as well as pocket push-button quick-release sling swivels, are available separately from Mesa Tactical.

### REAR SLING PLATE

The Urbino tactical stock features a Benelli-style rear sling plate for installation of two-point slings. The installation of this component is entirely optional. Unlike the Benelli version, the Mesa Tactical Urbino tactical stock sling plate accepts US military standard 1¼ inch sling webbing. Also, the sling plate floats freely in its slot, so it may rattle a little during use. Noise can be mitigated by, for example, applying masking tape to the recoil spring tube or bolt that retains the sling plate, or the sling plate can be left off entirely. Once webbing is installed, there will be little or no noise.



With most semi-auto shotguns, the sling plate will be retained by the recoil spring tube; with the Benelli SuperNova and the Beretta 1301, it will be retained by the stock support rod; with the Remington 870, it will be retained by the long bolt that secures the stock to the receiver (this is why the Remington version of the Urbino tactical stock comes with two sling plates with different sized center holes).

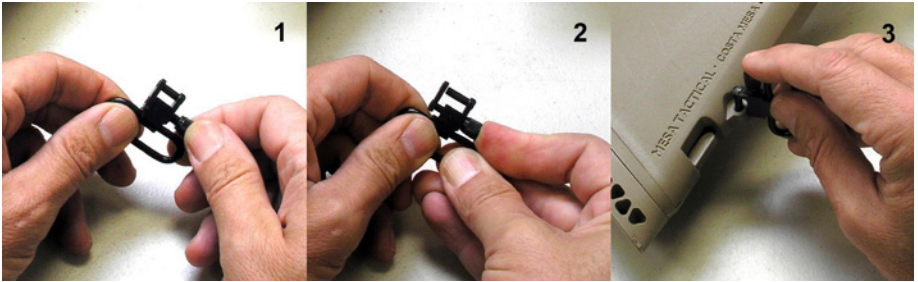
### QD SLING SWIVEL

The Urbino tactical stock includes a QD style sling swivel (as distinct from push-button



style sling swivels) that can optionally be installed in the small hole at the lower rear of the stock. To install the QD sling swivel, refer to the photo and instructions below:

1. Unscrew the knurled knob on the QD sling swivel assembly.
2. When the knob is screwed out, push on it to slide the swing arm out, and then rotate the swing arm away from the pivot rod.
3. Slide the pivot rod into the hole in the Urbino tactical stock. Push the knurled knob again to rotate the swing arm back over the pivot rod, and tighten the knob to secure the swing arm in place.



## MOUNTING THE URBINO TACTICAL STOCK TO THE SHOTGUN

While the Urbino tactical stocks can be installed on almost a dozen different shotgun platforms, there are essentially four basic installation methods, depending on the platform.

<i>Installation method</i>	<i>What it entails</i>
Bolt mounting	A screw or bolt is used to attach the stock to the shotgun receiver or support rod
Large nut mounting	A large diameter nut is screwed onto a semi-auto shotgun's return spring tube
Small nut mounting	A small diameter nut is screwed onto a support rod or mounting stud
Special for Mossberg 930	A variation on the large nut method, this stock also requires a replacement return spring and tube

In each case, the first part of the installation process is to remove the shotgun's factory stock. There are many different methods for this, and most require the factory buttpad first be removed to allow access to the stock mounting hardware. Buttpads are usually

secured to the stock by small Phillips head screws at the top and bottom of the rear of the butt (Remington, Beretta, some Benelli shotguns). Some Benelli models feature a buttpad that snaps off without tools.

Once the buttpad is off, use a socket wrench or a screwdriver or an Allen key as appropriate to unfasten the factory mounting hardware and remove the factory stock. No parts of the factory stock, except in some cases the mounting bolt or nut, will be used with the Urbino tactical stock.

The **Benelli M4** shotgun is a very special case: the entire stock is simply unscrewed from the return spring after first removing the shotgun's trigger group (consult the *Benelli M4 Super 90 Owner's Manual*); do not attempt to remove the Benelli M4 shotgun's factory buttpad or mounting hardware.

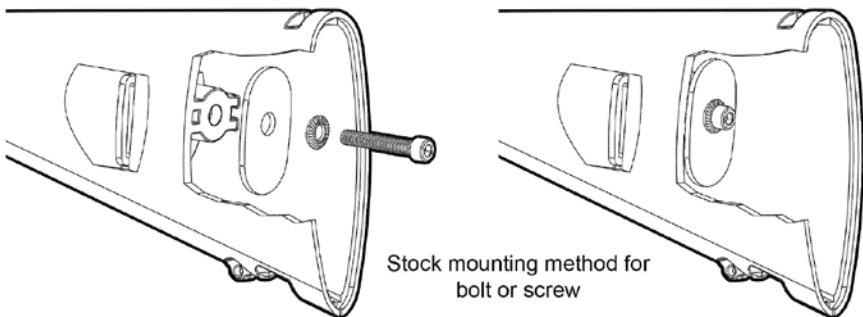
**Before installing the Urbino tactical stock on the Benelli M4 shotgun, be sure to re-install the trigger group.**

The **Mossberg 930** shotgun is another special case: installation of the Urbino tactical stock on this platform requires the swapping of the return spring and return spring tube; consult the special instructions beginning on page 11.

## BOLT MOUNTING INSTALLATION

The **Benelli M4**, **Remington 870** and **Remington Versa Max** shotguns use the bolt mounting installation. In these cases, the mounting hardware includes three components:

1. The bolt (the factory bolt is reused with the Versa Max shotgun; a new bolt is supplied with the Urbino tactical stock for the Remington 870 and Benelli M4 shotguns);
2. A spring lock washer;
3. A recoil plate.



With the bolt mounting installation, the recoil plate is set against the plastic mounting



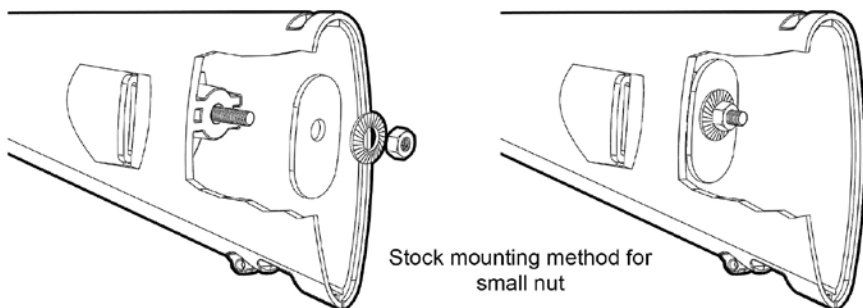
bridge inside the stock, and the spring lock washer set on top of that. Then the bolt is passed through both and tightened.

## SMALL NUT MOUNTING INSTALLATION

Most of the **Benelli** shotguns use the small nut mounting method, as does the **Beretta 1301** shotgun.

The nut is used to secure the Urbino tactical stock to a threaded stud that projects from the rear of the return spring tube or the stock mounting rod, or to a threaded stock support rod. The mounting hardware includes three components:

1. The nut (the factory nut is reused in all cases);
2. A spring lock washer;
3. A recoil plate.



With the small nut mounting installation, the Urbino tactical stock is slipped over the end of the threaded mounting stud. The recoil plate is set against the plastic mounting bridge inside the stock, and the spring lock washer set on top of that. Then the nut is tightened against both.

## BENELLI REAR STUD

**Benelli M1, M2, M3** and **SuperNova** shotguns can be fitted with either of two different rear mounting stud designs.

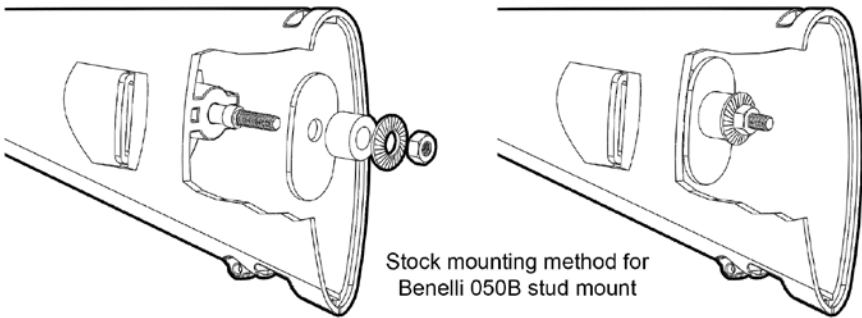
- The 050G stud projects from the rear of the return spring tube (or mounting rod in the SuperNova shotgun) and is threaded for its entire length. The Urbino tactical stock was originally developed for this stud.
- The 050B stud features a flanged annular ring above an unthreaded length of the rod, with threads above it. The Urbino tactical stock's mounting hole might be too small to fit over the flanged annular ring, in which case the hole will need to be opened up with a 10mm (3/8 or 25/64 inch) drill bit, or a rat tail file. This may also be true of the recoil plate.

Urbino tactical stocks for these Benelli platforms include all the hardware necessary to install the stock with either of these two stud types.

If your Benelli shotgun is fitted with the fully threaded 050G stud, installation is exactly the same as the small nut method described above.

If your Benelli shotgun is fitted with the 050B stud, use these four components to mount your Urbino tactical stock to the shotgun:

1. The nut (the factory nut is reused in all cases);
2. A spring lock washer;
3. A nylon sheath or spacer;
4. A recoil plate.

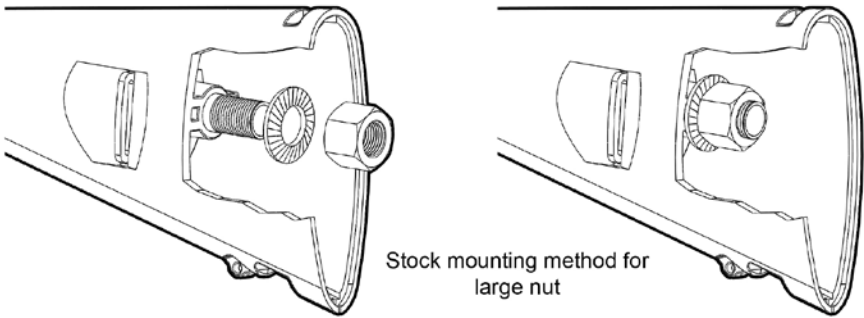


The recoil plate is set against the plastic mounting bridge inside the stock, and then the spacer is installed over the unthreaded part of the stud. The spring lock washer is placed on top of that and finally the factory nut is tightened against the assembly.

## LARGE NUT MOUNTING INSTALLATION

The **Remington 1100** and **Remington 11-87** shotguns use the large nut mounting installation. In these cases, the mounting hardware includes only two components:

1. The nut (supplied with the Urbino tactical stock kit; do not attempt to reuse the factory nut);
2. A spring lock washer.



With the large nut mounting installation, the Urbino tactical stock is slipped over the end of the threaded return spring tube. The spring lock washer is set against the plastic mounting bridge inside the stock, then the nut is tightened against it.

## MOSSBERG 930 INSTALLATION

Installing the Urbino tactical stock on the Mossberg 930 shotgun is fundamentally different from the simple stock swaps discussed above.

As with most semi-automatic shotguns, the Mossberg 930 shotgun features a return spring tube that runs from the rear of the receiver down through the inside of the butt-stock. The return spring forces the bolt back into battery after every shot. The Mossberg 930 shotgun comes from the factory with a very long spring tube, in fact too long for the Urbino tactical stock's shortened length of pull. The Urbino tactical stock kit for the Mossberg 930 therefore includes a replacement return spring and return spring tube, as well as tools to help with the swap.

**Mesa Tactical have produced an installation video for the Urbino tactical stock swap on a Mossberg 930 shotgun that can be viewed on YouTube at the following URI: <https://youtu.be/FFsKMX9BfZU>**

The Urbino tactical stock swap for the Mossberg 930 comprises the following steps:

1. Remove factory stock;
2. Remove factory return spring tube and return spring;
3. Install shortened return spring and return spring tube;
4. Install Urbino tactical stock.

Each of these steps will be discussed in more detail below. To perform the swap, you will need a vise and a  $\frac{3}{4}$  inch socket wrench or adjustable crescent wrench.

### REMOVE MOSSBERG 930 SHOTGUN FACTORY STOCK

First, of course, ensure the shotgun is unloaded and pointed in a safe direction at all times.

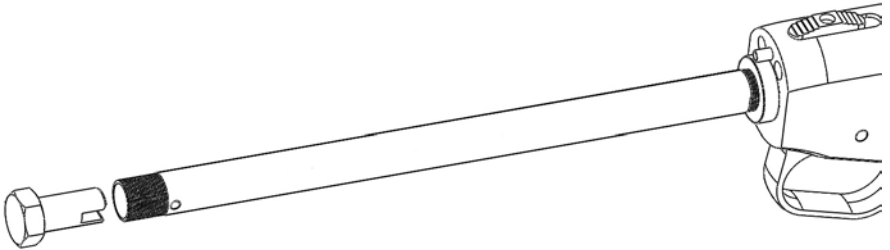
Follow the directions in the *Mossberg 930 Autoloading Shotgun Owner's Manual* to remove the factory stock.

### REMOVE MOSSBERG 930 SHOTGUN FACTORY RETURN SPRING TUBE AND RETURN SPRING

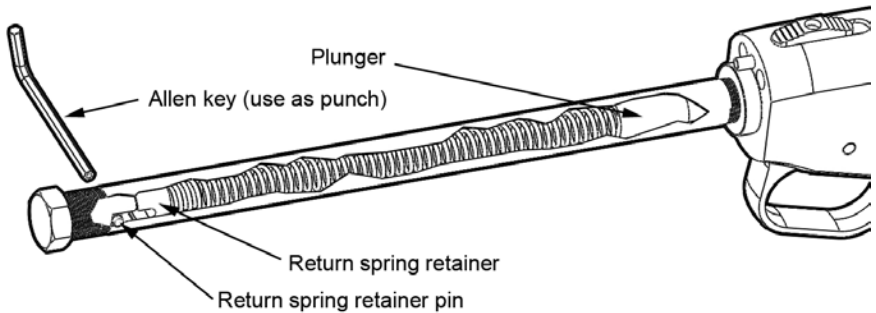
Ensure the bolt is closed before beginning the next steps.

The return spring tube is a steel tube that is threaded at both ends. All you need to do is unscrew the tube from the shotgun receiver, then swap out the tube and the spring. You will first need to secure the shotgun receiver in a vise.

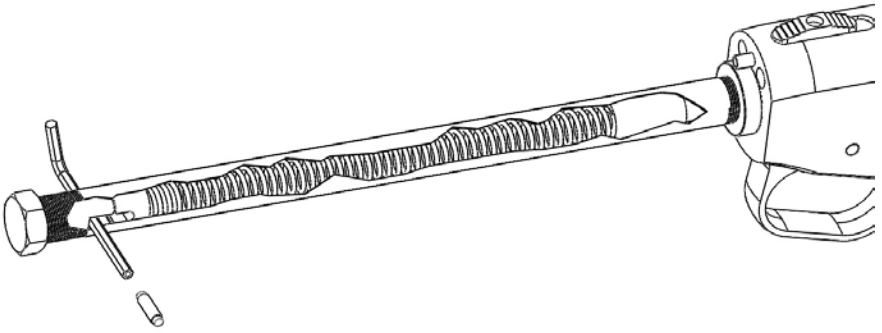
The Urbino tactical stock kit includes a return spring tube tool, slotted at one end with a  $\frac{3}{4}$  inch hexagonal head.



Press the slotted end of this tool into the rear of the return spring tube so the slot slips over the return spring retaining pin.

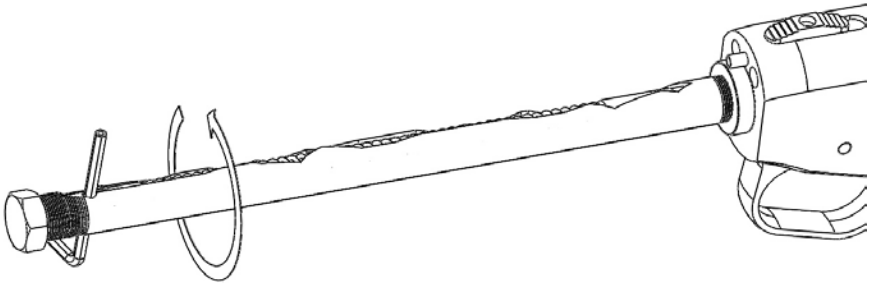


With pressure on the return spring retainer, use the Allen key included with the Urbino tactical stock kit as a punch to drift the return spring retaining pin out of the tube.



Note that you will reuse all the components illustrated except the return spring and the return spring tube, so keep them secure as you remove them from the shotgun.

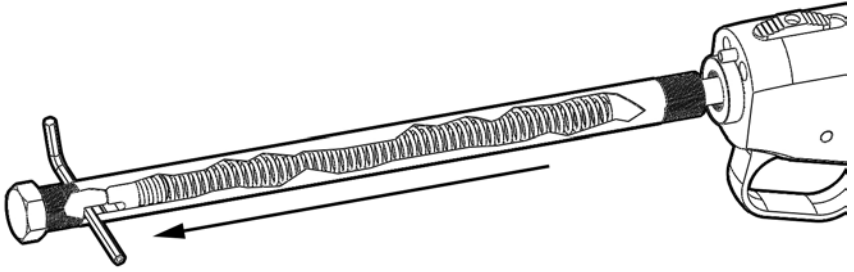
While continuing to put pressure against the spring, twist the tool in a counterclockwise direction to unscrew the return spring tube from the shotgun receiver.



On most shotguns, the return spring tube breaks free easily, and can soon be unscrewed by hand. However, some shotguns are more stubborn, and if you are unable to break the tube loose you will need to apply heat from a heat gun to the return spring tube where it meets the receiver. Do not force the return spring tube to the point the return spring retaining pin holes are deformed or made oblong.

If the round bushing comes off the shotgun with the return spring tube, don't worry; you will be able to replace that when you install the Urbino return spring tube.

Once the return spring tube has been unscrewed from the receiver, pull it away from the shotgun. **Use caution at this step as the return spring assembly is still under spring tension.**



Put the factory return spring and return spring tube aside with the factory stock; you will not use these with the Urbino tactical stock.

### INSTALL SHORTENED RETURN SPRING AND RETURN SPRING TUBE

Usually the return spring tube will unscrew from the receiver bushing in which it is installed. Occasionally, however, the bushing itself will come out of the receiver with the return spring tube.

Because there is no simple and reliable way to separate the round bushing from the return spring tube to reuse it, Mesa Tactical will provide a replacement bushing with a hexagonal head, free of charge. Simply call 714-545-3332 and ask for part number 47478; or e-mail a request with your address to [support@mesatactical.com](mailto:support@mesatactical.com).



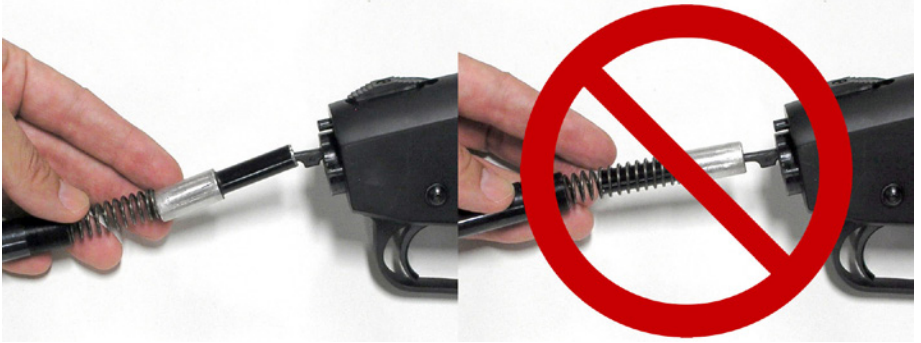
If necessary, install the Mesa Tactical replacement bushing by first applying a little anti-seize compound to the threads and screwing it into the receiver with an adjustable crescent wrench.

The new return spring assembly goes back together exactly the same way it came apart, except now with a shorter return spring and return spring tube. However it is important to remember to reinstall the return spring plunger correctly or the reassembled shotgun will not function.

**The only consistent problems Mesa Tactical have encountered in the field with the Urbino tactical stock for the Mossberg 930 shotgun have been failures of the bolt to**



**go into battery due to incorrect installation of the return spring plunger.** Please use the illustration below to ensure the return spring plunger is oriented correctly before you installed the Urbino return spring and return spring tube.



Note the narrow end goes toward the receiver and accepts the end of the bolt link. Do not install the narrow end inside the return spring.

Use the return spring tube tool and the Allen key to re-install the shorter return spring assembly in the reverse order of the disassembly. Then, while pressing down against the return spring retainer, reinsert the return spring retainer pin into its hole and remove the return spring tool.

As a function check, make sure you the bolt locks in place when you pull it all the way back. If it does not lock back, the return spring retainer pin is probably riding on the back of the return spring retainer instead of being nestled in its pin slot.

You are now ready to install the Urbino tactical stock on your new, shorter return spring assembly.

## **INSTALL URBINO TACTICAL STOCK ON MOSSBERG 930 SHOTGUN**

The Urbino tactical stock fits onto the return spring assembly as described above under *Large nut mounting installation* on page 10. You will reuse the factory stock retaining nut.

## **SUPPORT**

If you have any problems or questions, please feel free to contact Mesa Tactical for assistance at 714-545-3332 or [support@mesatactical.com](mailto:support@mesatactical.com).

## **WARRANTY**

Mesa Tactical warrants that all products are free from defective material and workmanship and, subject to the conditions set forth below, agrees to repair or replace any part of a product that proves defective by reason of improper workmanship or materials without charge for parts and labor.

In no event will Mesa Tactical be liable for damages, lost revenue, lost wages, lost savings or any other incidental or consequential damages arising from purchase, use or inability to use this product.

No express or implied warranty is made for Mesa Tactical product damaged by accidents, misuse, natural or personal disaster, or any unauthorized disassembly, repair or modification. Mesa Tactical's warranty covers only repair or replacement of defective Mesa Tactical products.

# **MESA TACTICAL**



## **GEAR AND ACCESSORIES FOR LAW ENFORCEMENT, MILITARY AND PERSONAL DEFENSE**

1775 Kuenzli St • Reno, NV 89502  
Tel: 714-545-3332 • Fax: 714-545-3339

**[www.mesatactical.com](http://www.mesatactical.com)**

Copyright © 2004-2017 Mesa Tactical. All rights reserved.

Mesa Tactical, High-tube, LEO, Urbino and SureShell are registered trademarks of Mesadyne Corporation.